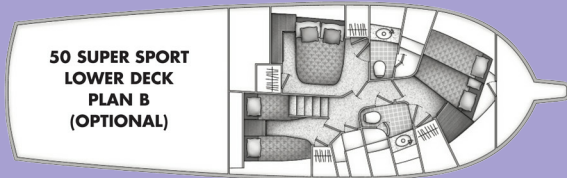
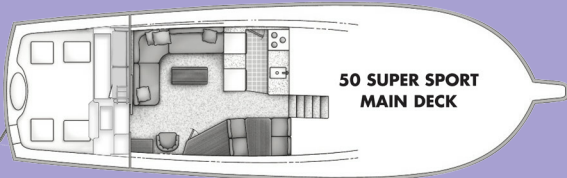
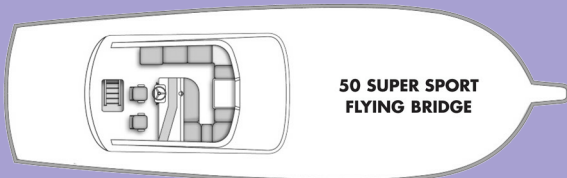
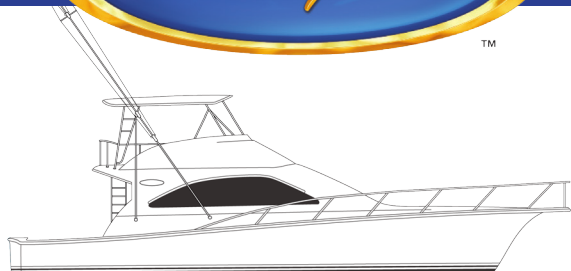




# 2018 50 Super Sport

Twin Volvo Penta D13 900 MHP Diesels  
 Twin CAT C18A 1015 & 1150 MHP Diesels  
 Twin MAN V8 1000 & 1200 MHP Diesels



## SPECIFICATIONS

Length.....	50'6"	15.39 m
Beam.....	16'9"	5.10 m
Draft.....	4'5"	1.35 m
Freeboard, Bow.....	6'1"	1.85 m
Freeboard, Stern.....	3'1"	0.94 m
Fuel Capacity <sup>2</sup> .....	780 gal.....	2,952.30 l
Water Capacity <sup>2</sup> .....	150 gal.....	567.75 l
Displacement.....	54,038 lb.....	24,511.64 kg
Height (waterline to top of hardtop).....	18'0"	5.48 m
Headroom (most areas).....	6'5"	1.96 m
Sleeping Capacity.....	6-8	

## STANDARD EQUIPMENT

### ENGINE ROOM AND PROPULSION

Sound & heat insulated engine room  
 Anti-fouling bottom paint  
 Awlgripped engine room, lazarette & bilges  
 Twin diesel, water cooled engines with  
 lubricating oil & recovery systems  
 Engine synchronizer  
 Engine hour meters  
 Alternators  
 Fuel filters - main engines & generator  
 Propellers (2) - Nibral  
 Shafts (2) - Aquamet 22  
 Bronze rudders & struts  
 Trim tabs with indicators on flybridge  
 External sea strainers - large wedge type  
 Internal sea strainers -  
 generator & air conditioning  
 Fiberglass mufflers w/surge protection  
 Automatic fire extinguisher system with safety  
 shutdown  
 Electric oil exchange system- engines,  
 transmissions & generator  
 Heat recovery bottles - engines & generator  
 Electric fuel priming pump  
 Fuel transfer pump  
 Fresh water spigot in engine room  
 Electrical outlet, GFCI  
 Engine room cross ventilation  
 Dripless rudder ports and shaft seals

### ELECTRICAL SYSTEM

1Generator, 12.5 kW - water cooled  
 50' Shore cord - 50A/240V,  
 with automatic cord reel  
 Electrical outlets, 120V with GFCI protection  
 Batteries (8) - heavy duty,  
 deep cycle/cranking battery (two banks)  
 Dyna plate ground system  
 Battery parallel system - Automatic  
 Automatic battery charger - 24V, 30 amp  
 Internal bonding system  
 Electrical panel with circuit breakers,  
 voltmeters & battery condition indicator  
 Zoned air conditioning  
 with reverse cycle heating  
 Zinc anodes  
 Galvanic isolator  
 12V step-down transformer for flybridge

### LIGHTING SYSTEM

Navigation lights  
 Cockpit courtesy lighting  
 24V & 120V lighting throughout  
 Engine room lighting - 24V & 120V  
 Back lighting on electrical panel  
 & flybridge instruments

### WATER SYSTEM

Hot water heater - 20 gallon<sup>2</sup>  
 Water pressure system  
 Enclosed shower sump pump - 24V (automatic)  
 Faucets  
 Central main drain aft  
 VacuFlush head system  
 Holding tank - 55 gallon<sup>2</sup>  
 Dockside water connection  
 with pressure reduction valve

### DECK AND OUTFITTING

Bow pulpit with anchor roller  
 Aluminum bow rail  
 Window rails - aluminum, powdercoated  
 Forward deck hatch with screen and shade  
 Cleats (10") - 3 bow, 4 spring, 2 stern  
 Hawse pipes (2)  
 Docklines (6) - 35' x 5/8"  
 Fenders (2) - 8 1/2" x 28"

### SAFETY AND NAVIGATION

Anchor - 40 lb danforth  
 Anchor chain - 15'  
 Anchor line - 300' x 5/8"  
 Fog bell  
 Air horns  
 Fire extinguishers - 2 1/2 lb portable (3)  
 & 5 lb portable (1)  
 Carbon monoxide & smoke detector  
 First aid kit  
 Olin flare kit  
 Life jackets - Type I (6) & Type IV (1)  
 VHF radio with antenna  
 Furuno RD-33 System for water depth  
 & temperature  
 Compass - 4" flush mount  
 Hydraulic steering  
 Electronic controls with  
 Palm Beach style handles  
 Seacocks (quick-action ball valve) -  
 on all through-hull fittings below waterline  
 Fuel shutoff valves (quick-action ball valve)  
 Engine alarm system  
 Bilge pumps - automatic (3)  
 High bilge water alarm  
 Tinted safety glass

*The Best Part Of Life Is Spent On An Ocean*

## STANDARD EQUIPMENT

### COCKPIT

Molded fiberglass, self bailing  
Molded live baitwell in transom  
Rod holders (4)  
Seawater & freshwater washdowns  
Insulated fishboxes with pumpout (2)  
Freezer  
Side lockers  
Insulated drink box (in salon entry step)  
Stereo speakers (2)  
Lazarette access  
Engine room access  
Transom door & hinged gate  
Under-hatch dunnage bin  
Boarding step box

### MEZZANINE

Bait prep center with storage  
In-deck freezer  
Lounge seat with cushions & storage  
Molded steps to cockpit  
Engine room access

### FLYING BRIDGE

Fully instrumented, molded fiberglass open flying bridge  
Hardtop with molded-in spreader lights & 3-sided enclosure  
Pompanette T2005-W helm & companion chairs (2)  
Aluminum ladder & aft safety rail with 6 rocket launchers  
Chart light  
Electrical sub-panel  
Electrical outlet (120V)  
Accessory outlet (12V)  
Fuel gauges  
Lounge seating with bolstered cushions & storage  
Insulated cooler (1)

### SALON

Aluminum sliding door with security lock  
Carpeting, with canvas runner  
Upholstered panels & valances  
Headliner  
Silhouette blinds  
L-shaped lounge seating with rod storage  
Central vacuum system  
Zoned air conditioning with reverse cycle heating  
Icemaker  
30" flatscreen TV  
Bose V25 stereo with remote  
Cocktail table with storage  
Personal choice interior decor selection (custom)

### GALLEY/DINETTE

Corian® countertop & sink  
Amtico® flooring  
Convection/microwave oven

Recessed 3-burner range  
Trash compactor  
Sub-Zero under counter drawer-style refrigerator (1) & freezer (1)  
Booth style dinette with hi-gloss table  
Spacious drawers & cabinets  
Ground fault electrical outlets  
Instant hot water faucet  
Exhaust blower  
Water tank gauge  
Equipment/compressor room (under sole) with storage

### MASTER STATEROOM

Full berth with 5" foam mattress & storage  
Fitted sheet set  
Bedspread, pillows (2) & shams (2)  
Nightstand with drawers  
Hanging lockers (2)  
20" flatscreen TV with DVD player & remote  
CD player with AM/FM stereo & speakers  
Private head access  
Drawers & cabinets

### GUEST STATEROOM - PLAN A

Full berth with 5" foam mattress  
Fitted sheet set  
Bedspread, pillows (2) & shams (2)  
Hanging lockers (2)  
Private head access  
Cabinets  
Deck hatch with screen & shade

### GUEST STATEROOM - PLAN B

Twin over/under berths with 5" foam mattresses & zippered covers  
Fitted sheet set  
Pillows (3) & shams (3)  
Hanging locker  
Cabinets  
Deck hatch with screen & shade

### CREW STATEROOM

Side by side twin berths with 5" foam mattresses & zippered covers  
Fitted sheet set  
Pillows (2) & shams (2)  
Hanging locker

### COMPANIONWAY

Washer & dryer

### MASTER AND GUEST HEADS

Private showers with automatic enclosed sump pumps & overhead lighting  
Vanities with Corian® countertops & sinks  
Mirrored medicine cabinets  
VacuFlush heads  
Amtico® flooring  
Towel bars  
Exhaust blowers  
Lighting - 24V & 110V  
Ground fault outlets - 110V  
Storage

## 50SS OPTIONAL EQUIPMENT

### ELECTRICAL

- Bow thruster (24V).....
- Built-in 20" Flatscreen TV in (guest or crew staterooms).....
- Built-in 20" Flatscreen TV with DVD in (guest or crew staterooms).....
- Outlets (extra, each) – 110V, TV.....
- CD player with AM/FM stereo & speakers (guest or crew staterooms).....

### DECK & OUTFITTING

- Lewmar V3 windlass .....
- Swim platform .....
- Swim ladder – two step folding.....
- Additional deck hatch with sliding screen & shade .....
- Teak coverboards .....
- Teak coamings .....
- Teak salon entry steps .....
- Bow washdown .....
- Gelcoat hull color (to be approved by Ocean).....
- Spare propellers .....
- Additional fuel – 98 Gal (878 Gal<sup>2</sup> Total) .....
- Emergency bilge valves (ea.).....
- Prop Smith – 2 1/2" shaft size .....
- Refrigerated Drink Box (step) .....

### FLYING BRIDGE

- Hatch in hardtop (ea.) .....
- Costa Clear 3-sided enclosure (in lieu of standard).....
- Upper vents in enclosure (ea.).....
- Aft enclosure .....
- Air conditioning with reverse cycle heat.....
- Safety hatch for flybridge ladder access .....
- VHF radio compartment recessed in hardtop with 12V actuation.....
- Electric teaser reels (pair) recessed in hardtop:  
Miya Epoch Super US-9 HD .....
- Refrigerator/freezer (1) in insulated cooler.....

### FISHING EQUIPMENT

- Rod holders (extra, each) .....
- Rupp riggers with double box spreaders.....  
36' poles, & flybridge release (pair)
- Rupp center rigger .....
- Refrigerated fish box.....
- Eskimo Icemaker EI 540 .....
- Trolling Valves .....

### INTERIOR

- Sofa bed.....
- Amtico® flooring at salon entrance.....
- Amtico® flooring under dinette (in lieu of standard).....
- Plan B forward stateroom layout (in lieu of standard) .....
- Bose Lifestyle V35 stereo system (in lieu of standard) .....
- Clear salon carpet cover (in lieu of standard).....
- Steps & companionway runner (canvas).....

### INTERIOR WOOD SELECTIONS (satin finish)

- Teak     Cherry     Walnut
- Hi-gloss finish for interior wood .....

### DECOR

- Accessory package.....

### DELIVERY PREPARATION

- Cost of fuel at time of delivery

Every Ocean Yacht is backed by a transferable Ocean Yachts 5 & 1 Limited Structural Warranty<sup>3</sup>. Engine, generator, and associated equipment limited warranties are provided by their respective manufacturers. Warranty terms and conditions are available upon request.

Photographs and drawings may contain options or other features not covered by the base price. Ocean Yachts reserves the right to make changes to its standard or optional equipment list or to what is shown in visual representations of its models in advertising and sales materials. Ocean Yachts may do so at any time and without prior notice. Ocean Yachts also reserves the right to make such changes without incurring any obligations to equip or modify boats or models manufactured prior to the effective date of such change.

<sup>1</sup>Generator is not intended to supply power for all standard and optional equipment. Load must be limited to generator output rating. <sup>2</sup>Capacities of tanks are estimates and useable volume will vary depending upon installation requirements and other conditions. <sup>3</sup>Ocean Yachts 5 & 1 Limited Structural Warranty does not extend to any gel-coat finishes. Colored gel-coat finishes are susceptible to fading. Ocean Yachts are constructed to meet or exceed all NMMA, ABYC, and US Coast Guard standards.

Optional equipment prices are subject to change. Fuel extra at delivery. Lettering of transom with original order.



*The Best Part Of Life Is Spent On An Ocean*

Ocean Yachts | P.O. Box 702, Egg Harbor City, New Jersey 08215  
609-965-4616 / 609-965-3517 | oceanyachtsinc.com | eggharboryachts@gmail.com